

Baseline Photograph

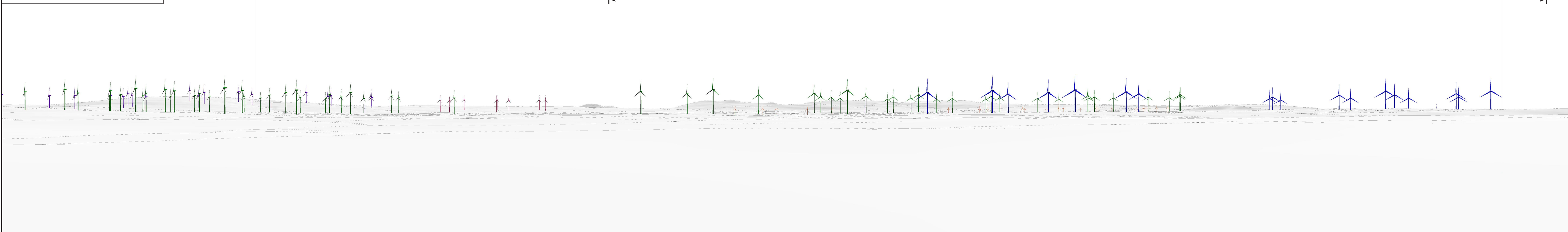
This image provides landscape and visual context only

Part 1 of 1



Cumulative Wireline View

Extent of 53.5° planar panorama



This cylindrical projection panorama has been captured, prepared and presented in accordance with the guidance set out in the Scottish Natural Heritage 2017 guidance 'Visual Representation of Wind Farms'.

- Proposed Turbines
- Existing Turbines
- Permitted Turbines
- In-Planning Turbines
- To Be Removed (Bellacorrick Turbines)



National Grid Coordinate (ITM)  
 Easting: 498673  
 Northing: 817075  
 Elevation: 91.2 m

Horizontal Field of View: 90° (cylindrical projection)  
 Principal Distance: 522 mm  
 Turbine Tip Height: 200m  
 Turbine Hub Height: 121m  
 Turbine Rotor Diameter: 158m

Date and Time: 06/11/2020 14:48  
 Camera: Canon 5D Mark II  
 Lens: Fixed 50mm  
 Camera Height: 1.7m (AGL)

Direction (clockwise from Grid N): 4°  
 Distance to Nearest Visible Turbine: 5.1 km  
 Nearest Turbine: 2





Wireline Model

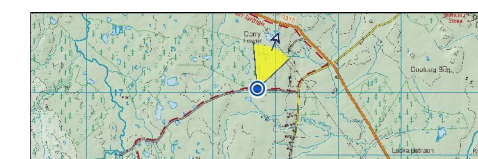
Part 1 of 1



View flat at a comfortable arm's length

This planar projection panoramic model has been prepared and presented in accordance with the guidance set out in the Scottish Natural Heritage 2017 guidance 'Visual Representation of Wind Farms'.

-  Proposed Turbines
-  Existing Turbines
-  Permitted Turbines
-  In-Planning Turbines
-  To Be Removed (Bellacorrick Turbines)



National Grid Coordinate (ITM)  
 Easting: 498673  
 Northing: 817075  
 Elevation: 91.2 m

Horizontal Field of View: 53.5 ° (planar projection)  
 Principal Distance: 812.5 mm  
 Paper size: (half A1) 841 x 297 mm  
 Correct printed image size: 820 x 260 mm

Date and Time: 06/11/2020 14:48  
 Camera: Canon 5D Mark II  
 Lens: Fixed 50mm  
 Camera Height: 1.7m (AGL)

Direction (clockwise from Grid N): 21 °  
 Distance to Nearest Visible Turbine: 5.1 km  
 Nearest Turbine: 2



Photomontage

Part 1 of 1



View flat at a comfortable arm's length

This planar projection panorama has been captured, prepared and presented in accordance with the guidance set out in the Scottish Natural Heritage 2017 guidance 'Visual Representation of Wind Farms'.



National Grid Coordinate (ITM)  
 Easting: 498673  
 Northing: 817075  
 Elevation: 91.2 m

Horizontal Field of View: 53.5 ° (planar projection)  
 Principal Distance: 812.5 mm  
 Paper size: (half A1) 841 x 297 mm  
 Correct printed image size: 820 x 260 mm

Date and Time: 06/11/2020 14:48  
 Camera: Canon 5D Mark II  
 Lens: Fixed 50mm  
 Camera Height: 1.7m (AGL)

Direction (clockwise from Grid N): 21 °  
 Distance to Nearest Visible Turbine: 5.1 km  
 Nearest Turbine: 2

